



Stage Events LED Matrix Moving Head with Durable Ultra-quiet Sliding Dance Light

Our Product Introduction

Basic Information

- Place of Origin: Guangdong, China
- Brand Name: Homei
- Minimum Order Quantity: 2 pieces
- Price: \$285.00/pieces 2-99 pieces
- Packaging Details: flightcase/carton
- Supply Ability: 200 Piece/Pieces per Day



Product Specification

- Color Temperature(CCT): 3500K (Warm White)
- Lamp Luminous Efficiency(lm/w): 120
- Color Rendering Index(Ra): 95
- Support Dimmer: Yes
- Lighting Solutions Service: Lighting And Circuitry Design, Project Installation
- Lifespan (hours): 50000
- Working Time (hours): 50000
- Product Weight kg : 16
- Type: Beam Lights
- Input Voltage(V): AC 100-240V
- Lamp Luminous Flux(lm): 20000
- CRI (Ra>): 95
- Working Temperature(°C): -20 - 50
- Mean Time Between Failures (MTBF): 50000



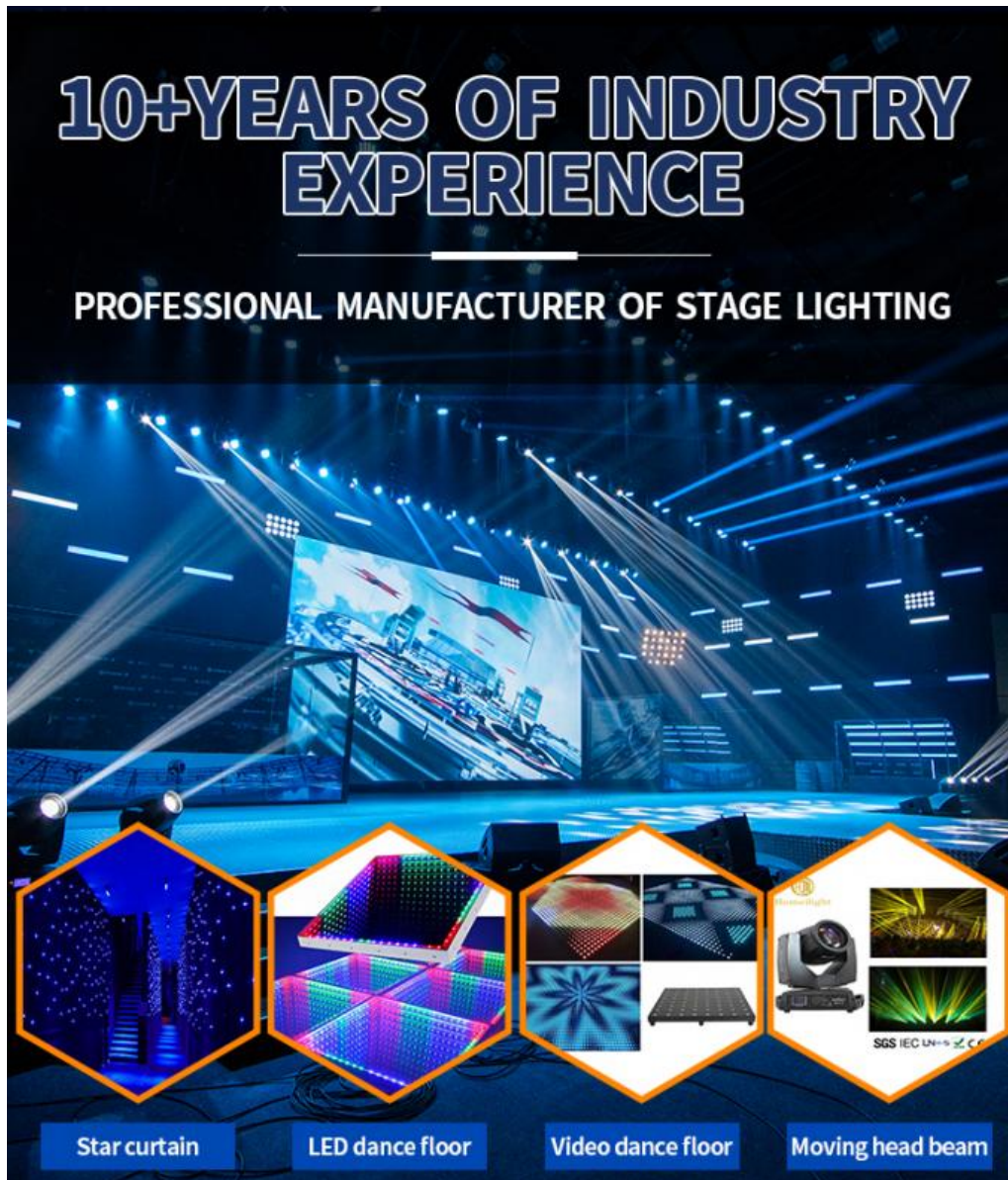
More Images



for more products please visit us on discostagelight.com

10+YEARS OF INDUSTRY EXPERIENCE

PROFESSIONAL MANUFACTURER OF STAGE LIGHTING



The main image shows a large stage with blue lighting and a video screen displaying a cityscape. Below the main image are four hexagonal insets showing different lighting products:

- Star curtain**: A stage with blue lighting and a video screen showing a cityscape.
- LED dance floor**: A stage with blue lighting and a video screen showing a cityscape.
- Video dance floor**: A stage with blue lighting and a video screen showing a cityscape.
- Moving head beam**: A stage with blue lighting and a video screen showing a cityscape.

Products Description



Product name	Durable Ultra-quiet Sliding LED Dance Light Disco Stage Events Light LED Matrix Moving Head
Voltage	AC100-240V,50-60Hz
Power consumption	400w
Light source	25*10w full color lamp beads,RGBW
Control mode	DMX512,automatic,master-slave,sound active
Channel	16/37/112CH
Connector	three-core XLR DMX512 signal connection Power can be connected in series



Aluminum alloy body, sturdy and durable

The longer it is used, the smoother the surface, wear-resistant and scratch-resistant, and more convenient to use



High brightness

imported lamp

beads, more durable



Promise rotation, wide irradiation area



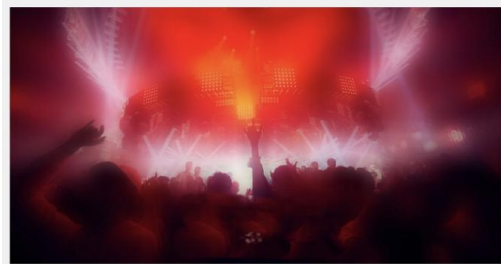
Quiet fan, efficient heat dissipation

Intelligent heat dissipation design, beautiful and durable, prolong the service life of lamps

Applications



WEDDING CEREMONY



BAR BINGE



CONCERT SCENE



STAGE PERFORMANCE

Product packaging



Carton



Flightcase

DELIVERY
AND
LOGISTICS

PAYMENT
METHOD

It's probably broken

Recommend Products

Why Choose Us

COMPETITIVE ADVANTAGES

1. Years of experience in LED stage light
2. Adopting the best materials: fireproof velvet
3. Advanced technology support
4. Well and High Quality Control,
5. Prompt Delivery,
6. New design product ,
7. Customer's Design and Logo are Welcome,
8. Competitive Prices,
9. Fit for Gifts and Premiums,
10. Earth-friendly Products,
11. Small Order Acceptable,
12. OEM Accept



Certifications

OUR STRENGTH





Carrie
Sales Manager

+86 13622820506

Carrie@homeilight.com

www.homeilight.com

2nd Floor, No. 146, Huadu Avenue, Huadu district, Guangzhou, China

Homeilight

Wechat WhatsApp

Company Profile

Established in 2008, Guangzhou HOMEI LIGHT is a manufacturer and trader, specialized in research, development and the production of stage light, all of our products comply with international quality standards and are greatly appreciated in a variety of different markets throughout the world.

Our main products: LED Dance Floor, LED Star Curtain, RGB Vision Curtain, Moving Head Beam, LED Wall Washer, LED Par Light, Spider Light, DMX Controller and so on.

If you are interested in any of our products or would like to discuss a custom order, please feel free to contact us. We are looking forward to forming long business relationships with you. We sincerely welcome you to visit our company or contact us for cooperation.



Hongmei stage lighting

LED DANCE FLOOR, LED STAR CURTAIN, RGB VISION CURTAIN, MOVING HEAD BEAM, LED WALL WASHER, LED PAR LIGHT, SPIDER LIGHT, DMX CONTROLLER AND SO ON.

APPLICABLE OCCASIONS



Wedding scene



Outdoor performance



Square



Indoor performance

PRODUCTION LINE

Multiple test/ Constant temperature and humidity /24 hours+ testing



OUR TEAM



FAQ

1. Q: Are you a factory or trading company?

A: We are a factory.

2. Q: Where is your factory located? How can i visit there?

A: Our factory is located in Guangzhou City,Guangdong Province, China. About 30 minutes away from Guangzhou Baiyun Airport. All our clients, from home or abroad, are warmly welcome to visit us!

3. Q: What's your certificates?

A: EMC,SGS,ROHS, and CE certificates passed.

4. Q: Can you help me to print our logo or company name on the products on package?

A: Of course. Your logo can be printed on the products or package. OEM&ODM permits.

5. Q: What's the shipping way, shipping time?

A: There ways of shipping, you can choose which is suitable for you.

(1). By Sea, 30 days, apply for bulk quality;

(2). By Air, 5-7 days, apply for bulk quantity;

(3). By Express, 3-5 days, apply for small quantity and urgent order.

6. Q: What's the payment terms?

A:T/T, Alibaba,Western Union or Paypal.

7. Q: How can i order?

A: Please send us your purchase list by e-mail, skype, fax, or making a call and you can also ask us to send you PI for your approval. We need to know the following information for your order.

8. Q: If the products broken during the warranty, what should i do?

A: If there is a problem with the products, you describe it and send pictures or video to us to analyse, then we will guide you how to fix it and provide spare parts on free if needed.



Guangzhou Hongmei Stage Lighting Co., Ltd



0086 15920458549



Joanna@homeilight.com



discostagelight.com

2nd Floor, No.1 Industrial Street, Yanger Village, Huadu istrict, Guangzhou,China